

Extreme Copper

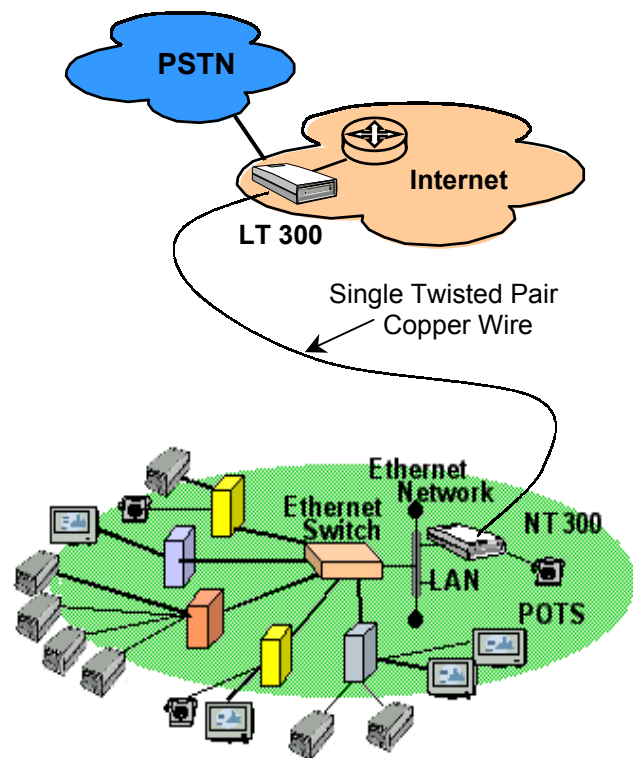
NE 300 Network Extender

Extreme Copper's advanced VDSL technology has added a new dimension in twisted pair solutions for the security industry. The NE 300 VDSL modem set will carry 27mbps of asymmetrical data in an TCP/IP format over a single pair of twisted wire of either Cat 1,2,3 or 5 up to 4000 feet. Furthermore, the range of 4000 feet can be extended in 4000 foot increments by using the NE 300 as a repeater.



Advantages of VDSL technology:

- Low cost solution for CCTV surveillance over long distances using a single twisted pair of wire.
- Extends the distance of 10/100 Ethernet/Cat 5 surveillance video, audio and control systems beyond the Cat 5 limitation of 330 feet.
- Simultaneously supports video, high-speed data, ISDN and POTS telephone service.
- Does not require PC or Software after initial programming has been completed.
- Easily accommodates Access Control system data or data streams from serial data to TCP/IP converters for security, building controls or plant process equipment.
- Inter-modem Data Link allows management of remote end (NT-300) via Telnet, SNMP.



Benefits:

- Low Cost
- Secure
- Easy installation
- Simple programming and configuration
- Implementation in either point to point and or point to multi-point applications.
- Uses existing site phone cabling.

Extreme Copper's VDSL technology provides low cost solutions in an increasingly cost sensitive yet environmentally demanding climate.

Extreme Copper, Inc.
996 Lawrence Drive, # 109
Newbury Park, CA 91320

Phone (818) 230-2477
www.extremecopper.com

Fax (818) 292-8590
e-mail sales@extremecopper.com



NE 300 Network Extender

Specifications:

Ethernet Interface:

- IEEE 802.3 10BaseT compliant
- IEEE 802.3u 100Base TX compliant
- 10/100 Mbps Full and Half Duplex, Auto-Negotiating

VDSL line rates:

- VDSL Rates are configurable via front access or through the GUI interface

HTTP Web-Based Management:

- Firmware upgrade via inter-modem data link
- Configuration via front access port

Electrical:

- External AC power cube
- 90 to 240 VAC @ 47 to 63Hz.
- Internal 18-72 VDC
- 2 Watt

Indicators:

- Power
- Ethernet "Good Link",
- Ethernet "Activity",
- VDSL "Sync",

Mechanical:

- Height 1.5in (3.8cm)
- Depth 5.0in (12.6cm)
- Width 3.8in (9.6 cm)
- Metal enclosure with wall mount tabs
- DIN Rail (optional)

Connectors:

- RJ45 for 10BaseT Ethernet access
- RJ11 for VDSL access
- RJ11 for ISDN, POTS access (external Bat required)

Operating Environment:

- Telcordia GR-57-Core
- Temperature: -40°C to +74°C
- Humidity: 10 - 95%, non-condensing

Regulatory Compliance:

- FCC Part 15 Class B
- UL 1950/ CSA C22.2 No.950